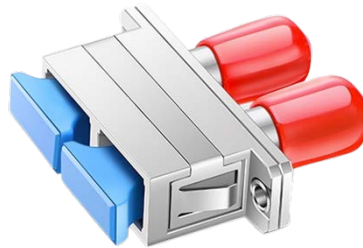
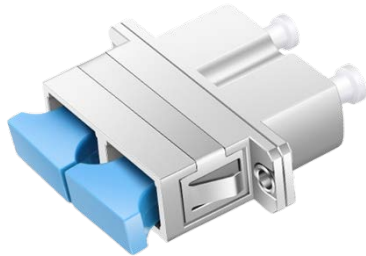


Hybrid Duplex Metal Fiber Optic Adapter Datasheet



Overview

A fiber optic adapter, sometimes also called a coupler, is a small device designed to terminate or link the fiber optic cables or fiber optic connectors between two fiber optic lines.

The Hybrid Fiber Optic Adapter is a special style of fiber optic adapter that supports the precision connection of different types of fiber optic connectors. It is specially designed to incorporate the Small Form Factor SC into LC/ST configured environment. The compact design enables network operators to reduce costs via space savings, and by eliminating hybrid cable assemblies.

Benefits

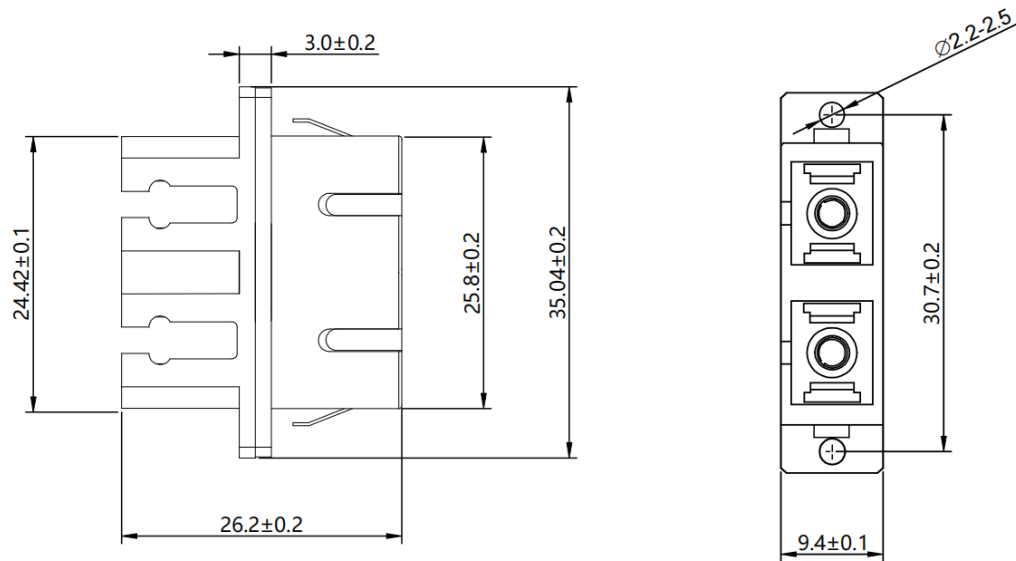
- $\leq 0.2\text{dB}$ (Typical) Low Insertion Loss
- Zirconia Ceramic Sleeve with High-precision Alignment
- Protective Dust Cap Keeps Adapter's Interior Clean from Dust
- Stainless Steel Clips for Tool-less Snap-in Installation
- Available in A Variety of Connector Types
- Can be Used with M2 Model Screw

Product Specification

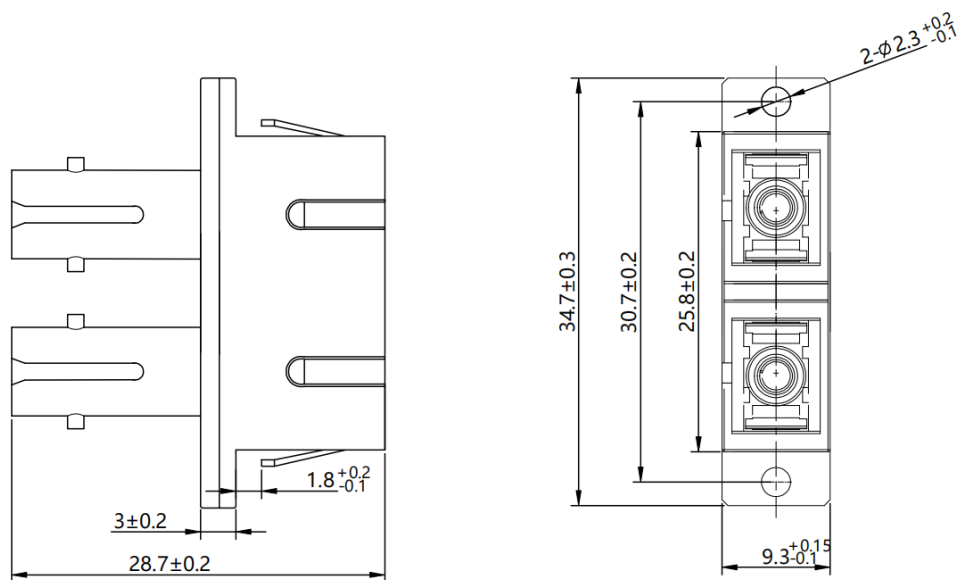
Specification	Hybrid Duplex Metal Fiber Optic Adapter	
#ID	#32596	#22345
Connector Type	LC-SC	ST-SC
Fiber Mode	Single Mode/Multimode	Single Mode/Multimode
Polish Type	UPC	UPC
Body Style	Duplex	Duplex
Insertion Loss	≤0.5dB	≤0.2dB
Mounting Type	Full flanged	Full flanged
Durability	1000 times	1000 times
Flammability Rate	UL 94V-0	UL 94V-0

Product Drawing

ID: #32596



ID: #22345



Note: Dimensions are in millimeters.