

Single Wallmount Cabinet with Openable Side Panels From Outside



Technical Features

| | |
|----------------------------|----------------------------|
| Material | 1-1, 5-2 mm steel |
| Color | RAL 7035 or RAL 9005 |
| Maximum Static Load | Up to 80 kg. |
| Finish | Electrostatic Powder Paint |

Standard Configuration:

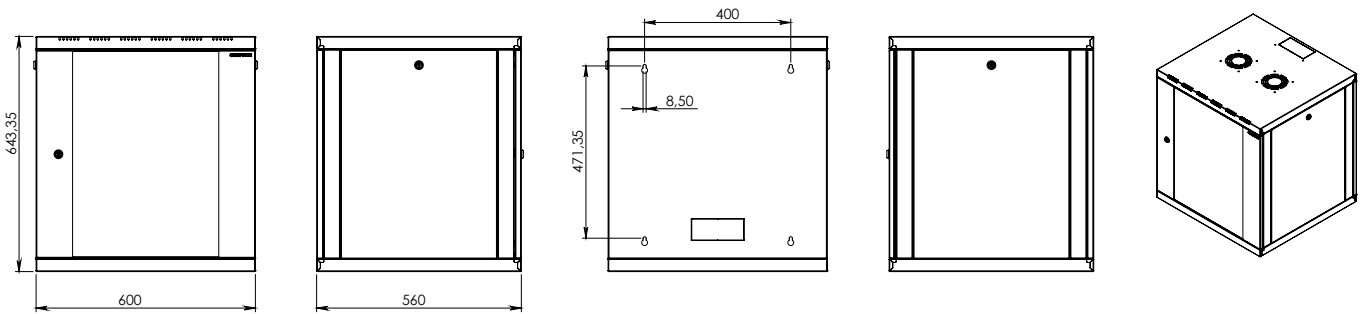
- Steel frame
- Glass door with cylindrical lock
- Openable side panels from outside
- 1 Pair of heavy duty 19" Mounting Rails
- RoHS compliant, UL Certified
- Flat Pack option available

Option:

- Adjustable feet or Castor Set (Solid front door)
- Available as floor standing cabinet as an option with castors or adjustable feet



CERTIFIED



Order Information

| Height U | Outer Width (W) mm | Outer Depth (D) mm | Outer Height (H) mm | Inner Width (w1) mm | Inner Depth (d1) mm | Inner Height (h1) mm | 19" Rails Adjustable Depth Range (c) | Weight kg | Part No |
|----------|--------------------|--------------------|---------------------|---------------------|---------------------|----------------------|--------------------------------------|-----------|--------------|
| 6 | 600 | 400 | 366 | 510 | 360 | 266 | 110-305 | 15 | WS30-X-0664A |
| 6 | 600 | 560 | 366 | 510 | 520 | 266 | 110-465 | 18 | WS30-X-0665A |
| 9 | 600 | 400 | 488 | 510 | 360 | 408 | 110-305 | 19 | WS30-X-0964A |
| 9 | 600 | 560 | 488 | 510 | 520 | 408 | 110-465 | 22 | WS30-X-0965A |
| 12 | 600 | 400 | 621 | 510 | 360 | 541 | 110-305 | 23 | WS30-X-1264A |
| 12 | 600 | 560 | 621 | 510 | 520 | 541 | 110-465 | 26 | WS30-X-1265A |
| 15 | 600 | 400 | 755 | 510 | 360 | 674 | 110-305 | 27 | WS30-X-1564A |
| 15 | 600 | 560 | 755 | 510 | 520 | 674 | 110-465 | 30 | WS30-X-1565A |
| 18 | 600 | 400 | 888 | 510 | 360 | 808 | 110-305 | 21 | WS30-X-1864A |
| 18 | 600 | 560 | 888 | 510 | 520 | 808 | 110-465 | 34 | WS30-X-1865A |
| 21 | 600 | 400 | 1022 | 510 | 360 | 942 | 110-305 | 33 | WS30-X-2164A |
| 21 | 600 | 560 | 1022 | 510 | 520 | 942 | 110-465 | 38 | WS30-X-2165A |